

## Equestrian at Frolic Farm

From beginners to experienced,  
everything for the rider

- The Big Sky Riding School -
  - Livery -
  - Polo -

### Fishing on Frolic Farm

- Carp lake -
- River -

### Activities on the Farm

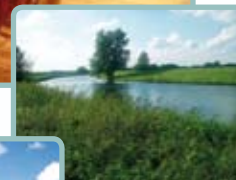
- Tennis -
- Walks -
- Cycling -

## Frolic Farm is a fantastic base to explore other areas:

- Cambridge City -  
(10 mins)
- Anglesey Abbey (National Trust) -  
(5 mins)
- Newmarket -  
(10 mins)
- Ely, and Wicken (National Trust) -  
(15 mins)
- Lavenham, Suffolk -  
(45 mins)

## Eating Out

Many choices locally and further afield,  
from fine dining in Cambridge City  
to rustic village pubs.



## Contact us:

Frolic Farm  
Lode  
Cambridge  
CB25 9HF

Tel: 01223 812922  
Fax: 01223 813382

Email: [frolicfarm@btinternet.com](mailto:frolicfarm@btinternet.com)  
Web: [www.frolicfarm.co.uk](http://www.frolicfarm.co.uk)

# Self Catering Holiday Cottages

on the Cambridgeshire / Suffolk border



Family run, self catering holiday cottages, nestled between Cambridge and Newmarket.

A home-from-home stay whether riding, fishing, walking, sightseeing, or just relaxing.

Enjoy a friendly welcome in the laid-back atmosphere of Frolic Farm, which provides great off-road riding over National Trust land, plus hundreds of acres of private grassland incorporating polo pitches, grass gallops and riverside rides.



## The Cottages and Farmhouse

We have two cottages and the Farmhouse with exposed beams, fireplaces for real fires and oak/stone floors. Furnished to a high standard with an elegant rustic flare.

All accommodation has laundry facilities, and television with DVD player.



**THE STABLES** sleep 6 in 3 bedrooms. On the ground floor we have a kitchen that overlooks the dining/sitting room with a great wood-burning fire.

The bathroom is on the ground floor as well as one double bedroom and a further twin bedroom. From the sitting room, a spiral staircase takes you to a light, airy mezzanine double bedroom that looks out over the stables.



**THE LOOKOUT** sleeps 6 in 3 bedrooms. The ground floor has an open-plan kitchen/dining/sitting room with woodburner.

The bathroom is also on the ground floor as well as a large double bedroom. A spiral staircase leads you to the lookout rooms, comprising of one twin room and then through to a double room with views towards the lake and polo pitches.

**FROLIC FARMHOUSE** sleeps 9/10 in 5 bedrooms. On the ground floor we have one double room, WC, very large open-plan sitting room with open fire, through to kitchen/dining and lobby area.

All living rooms open onto gardens, swimming pool and hot tub. First floor has two very large double bedrooms (one en-suite), and one with balcony overlooking paddocks to the river, one further double bedroom, one single bedroom plus family bathroom/shower.